

Logo Details

LOGO

PRINT

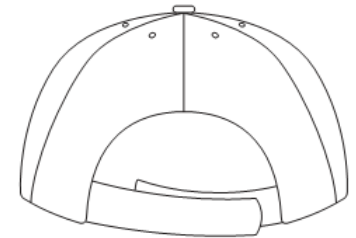
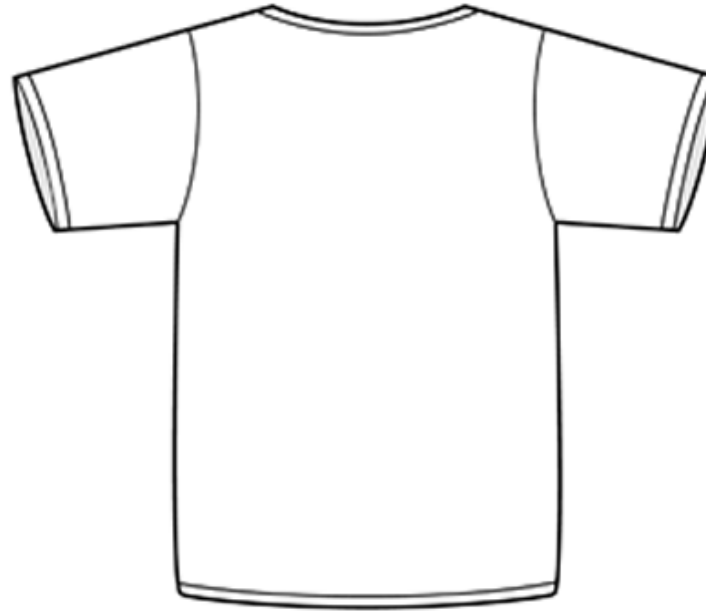
EMBROIDERY

TRANSFER

NEW

ON FILE

COLOURS & INSTRUCTIONS:



(On the pictures above draw a square of the approximate size of your logo in the area you want it to appear)

Credit Card Details If Required

Visa

MasterCard



Name on Card*

Credit Card Number*

Expiry *

Thank You from the team at uniformNZ

www.uniformnz.com